

**SARK  
ESTATE  
AGENTS**



ESTABLISHED 1970

PROPERTY DETAILS

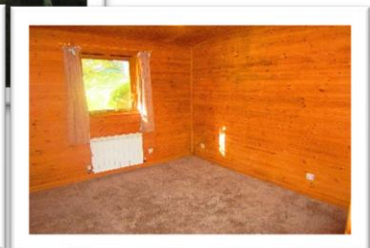


AGENTS FOR

# SHAKESPEARE CHALET

SARK

OPEN MARKET RENTAL



Price: £10,000 per annum

Swiss-style chalet set amongst communal gardens

2 bedrooms

1 bathroom

Open-plan kitchen/lounge/dining room

Central location

Annual renewal terms

Available subject to arrangement



A highly sought-after Swiss-style 2-bedroom wooden chalet, nestled comfortably amongst a small group of similarly styled buildings. The property is situated within private communal gardens, but is conveniently close to the main Avenue, with its shops, restaurants and cafes and is also in close proximity to the Harbour Hill transport system.



**Lounge/dining area/kitchen - 3.51 x 6.83m/10'7" x 9'8"**

A bright and airy room with two double glazed windows; one of picture orientation that opens fully and the other landscape orientation with a fixed pane. Two radiators and plenty of electrical sockets.

The kitchen has a lino floor with fully-fitted overhead and under counter kitchen cupboards, integrated gas oven with extraction, fitted fridge freezer and a stainless steel single drainer sink with mixer tap. Two windows give the kitchen ample natural light.



**Hallway - 2.03 x 0.96m/13'4" x 15'8"**

Carpeted flooring with ceiling light and airing cupboard.

**Bathroom - 2.28 x 1.73m/20'4" x 3'**

Consisting of one radiator, towel rail, a ceramic basin, WC and shower with bi-folding door. Tiled walls with bathroom mirror and shaving light.



**Master Bedroom - 3.05 x 3.37m/12'7" x 9'8"**

The principal bedroom has a portrait window with one radiator underneath. The controls for both the heating and hot water can be located in this room, which also has one ceiling light and plenty of sockets.

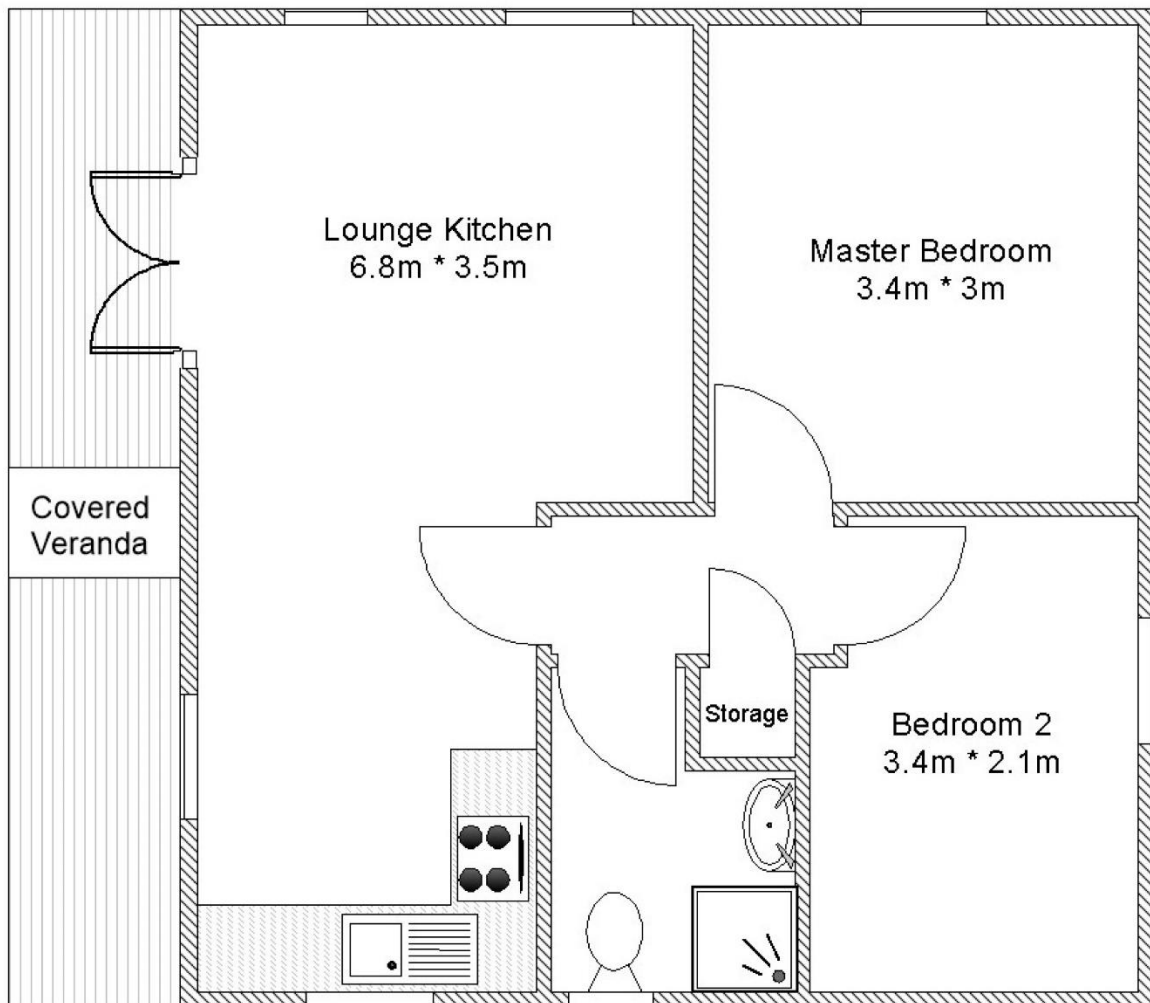
**Bedroom 2 - 3.59 x 2.22m/6' x 7'9"**

Carpeted with a portrait window and one radiator underneath. One ceiling light and ample sockets.





Shakespeare Chalet Ground Floor Plan.





## Services and details for Shakespeare Chalet

### Services

Mains electricity, oil-fired central heating and hot water, LPG gas for cooking, a shared borehole and a modern sewage system.

### Term

Available to rent on an annually renewable basis

### Property Tax

£264.00 per annum at the 2025 rate of £17.60 per quarter.  
The floor space of the property equates to 15 taxable Sark 'quarters'.

### Viewing

Strictly by appointment through Sark Estate Agents as the Vendors sole Agent.

### Vacant Possession

Available subject to arrangement

### Price

£10,000 per annum



**SARK  
ESTATE  
AGENTS**

ESTABLISHED 1970



We are here to help with every aspect of your island move.

For a more comprehensive and detailed list of all residential  
and commercial properties available to purchase or rent  
please contact us or visit

[www.sarkestateagent.com](http://www.sarkestateagent.com)



*Sark Estate Agents Ltd is registered with the Guernsey Financial Services Commission  
These details are the property of Sark Estate Agents Ltd and are not for reproduction without  
permission; they are issued on the implicit understanding that all negotiations concerning this  
property are conducted through this Agency and whilst care is taken in setting out these details we do  
not guarantee their accuracy, nor do they form a contract or any part thereof.*